



# READING YOUR NEW METER

Advanced digital meters will put more information in the hands of our customers, allowing you to make more informed decisions about your energy consumption.

Duquesne Light is replacing customers' current electric meters with new, digital meters. This exchange is part of an overall upgrade of the company's metering infrastructure required by Pennsylvania Act 129. Just like traditional analog meters, digital meters measure how much electricity you use. The main difference is that the new digital meters collect that information more times throughout the day.

## Usage Info, and Much More, Available Online 24-7

You can view your electric use at your convenience, 24-7, by going to our free online portal at [DuquesneLight.com/MyElectricUse](https://www.duquesnelight.com/MyElectricUse). In addition to checking your electric use, you'll be able to take advantage of a wide range of customized tools that give you more insight into how and when you use electricity, with the ultimate goal of helping you make more informed decisions about your energy consumption.

The portal features helpful information, such as:

- How does your most recent bill compare to last month's?
- Why do your bills differ month to month and year to year?
- Free tips to reduce your usage.

All this and more at [DuquesneLight.com/MyElectricUse](https://www.duquesnelight.com/MyElectricUse)

## Reading Your New Meter Is Easy

For those of you who would like to physically read your new digital meter, it's easy!

You already may have noticed that your meter scrolls through several different displays. These screens, which are pictured on the back page, show a variety of system and diagnostic information in addition to your kilowatt-hour usage.

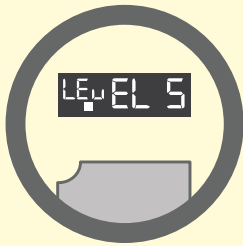
The screen you should be looking for to measure your usage, as pictured at the top of this page, has a five-digit number – in this case, 01227. To find out how much energy you have used in a given time, subtract this reading from a second reading taken at a later date. For example, if you go back to the meter a week later and it reads 01382, then you have used 155 kilowatt-hours during that time period ( $01382 - 01227 = 155$ ).

### What Is a Kilowatt-Hour?

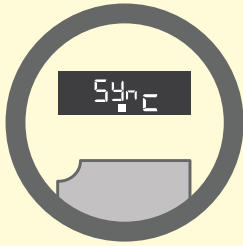
When you buy gasoline, you are charged by the gallon. When you buy electricity, the three main components of your bill – distribution, transmission and supply – are charged in cents per kilowatt-hour (kWh). A kWh is the equivalent of using ten 100-watt light bulbs for one hour.

### Other Scrolling Displays

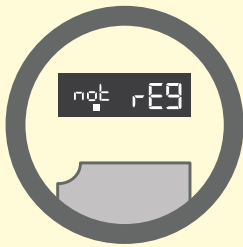
In addition to your kilowatt-hour usage reading, there is a variety of other information that scrolls through the display sequence. Below are examples of those system and diagnostic screens that provide valuable information to Duquesne Light.



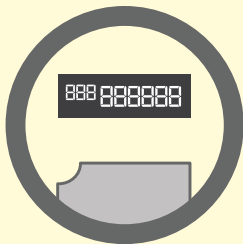
LEW EL 5



547c



not rEG



888 888888