



# PROJECT OVERVIEW

*Brunot Island-Crescent Transmission Reliability Project*

## PROJECT OVERVIEW

The demand for energy is growing and, as a result, Duquesne Light Company is working to maintain a level of service and reliability customers have come to expect, while increasing the overall resiliency of the transmission grid.

Duquesne Light is planning to rebuild and upgrade the 138-kilovolt electric transmission line from the Crescent substation in Crescent Township, PA, to the Brunot Island substation on the Ohio River, just west of downtown Pittsburgh.

Duquesne Light customers in Moon Township, Robinson Township, Kennedy Township, McKees Rocks Borough and the City of Pittsburgh are served by a network of 138-kilovolt transmission lines that were originally installed when the region looked very different than it does today. This network needs to be upgraded to better serve customers who live or work in this part of the region.

The design and technology upgrades will help to more efficiently deliver reliable, affordable and safe energy to homes, businesses and communities. These advancements are part of our Larger than Light promise.

## ABOUT THE INFRASTRUCTURE

Although the final design of the transmission line is not complete, the line includes approximately 110 self-supporting steel monopoles on a concrete foundation. The average height of a monopole is 175 feet and the average base is 8 to 10 feet. The average height of the existing lattice towers are 93 feet and the average base is 20 to 30 feet.

## TIMING

Construction is currently scheduled to begin in 2019 and end in 2021.

## NEXT GENERATION COMMITMENT

This project is part of a larger initiative to continue to improve the reliability of electric service for customers throughout Duquesne Light's service territory. As part of the company's commitment, we are investing more than \$2.9 billion in infrastructure and technology upgrades between 2011 and 2021. These investments will do more than keep your lights on; they'll help keep your life on.

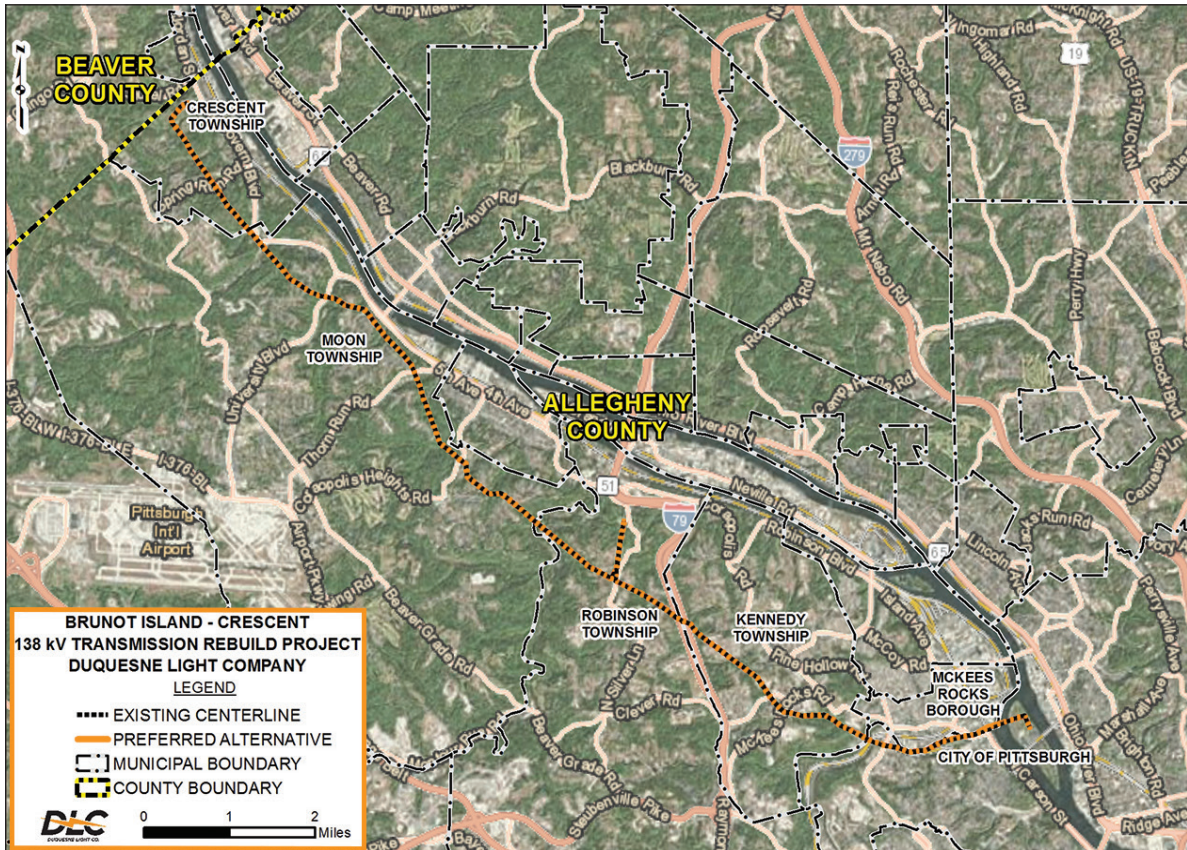
## MORE INFORMATION

If you have any questions or concerns, please contact Travis Moore, Brunot Island-Crescent Transmission Reliability Project Manager at (412) 393-6500 or email [BI-Crescent@duqlight.com](mailto:BI-Crescent@duqlight.com). Additional information can be found at [www.duquesnelight.com/BI-Crescent](http://www.duquesnelight.com/BI-Crescent)

## ABOUT DUQUESNE LIGHT COMPANY

Duquesne Light is committed to more than keeping the lights on; it powers the moments in its customers' lives. As a next generation energy company, Duquesne Light's nearly 1,500 employees are dedicated to delivering reliable and safe energy to more than a half million customers in southwestern Pennsylvania.

### PROPOSED ROUTE MAP

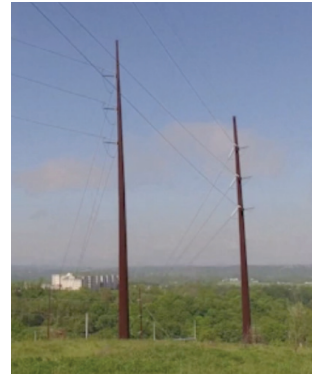


### INFRASTRUCTURE



**Existing Lattice Tower Structure**

Average height is 93 feet  
Average base is 20 to 30 feet



**New Monopole Structure**

Average height is 175 feet  
Average base is 8 to 10 feet